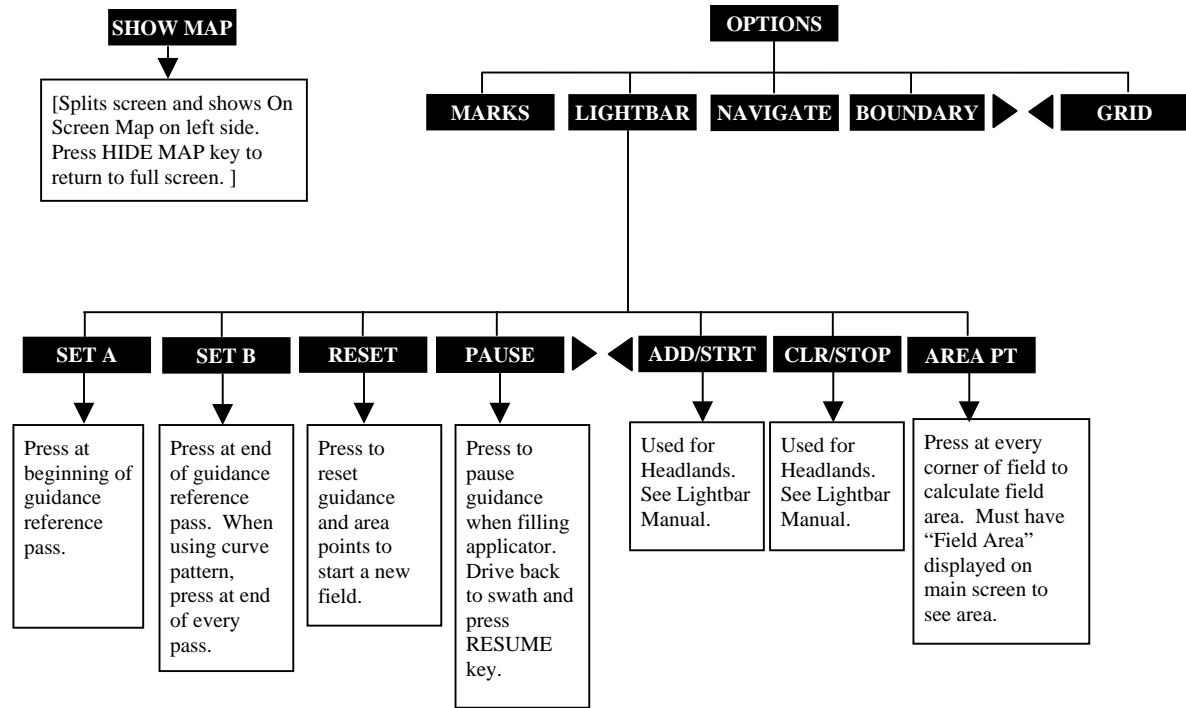
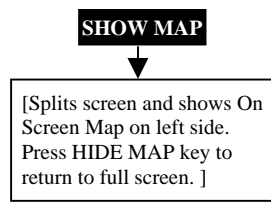
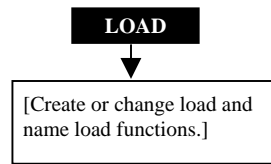
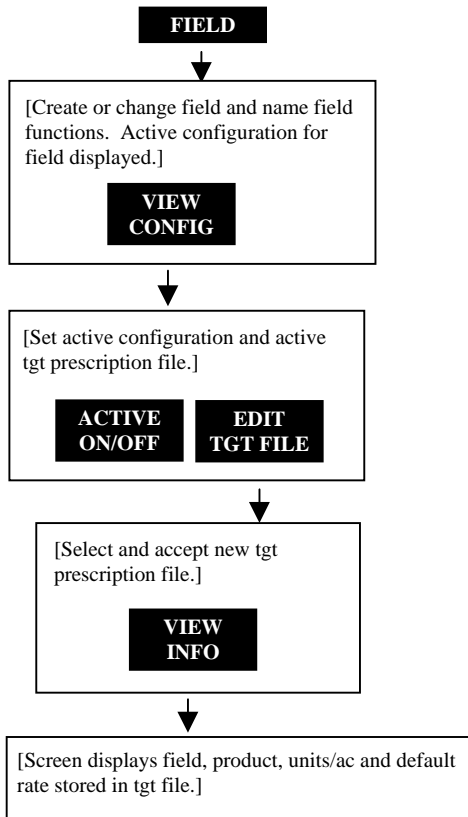
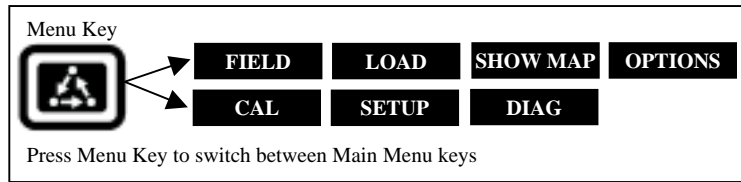
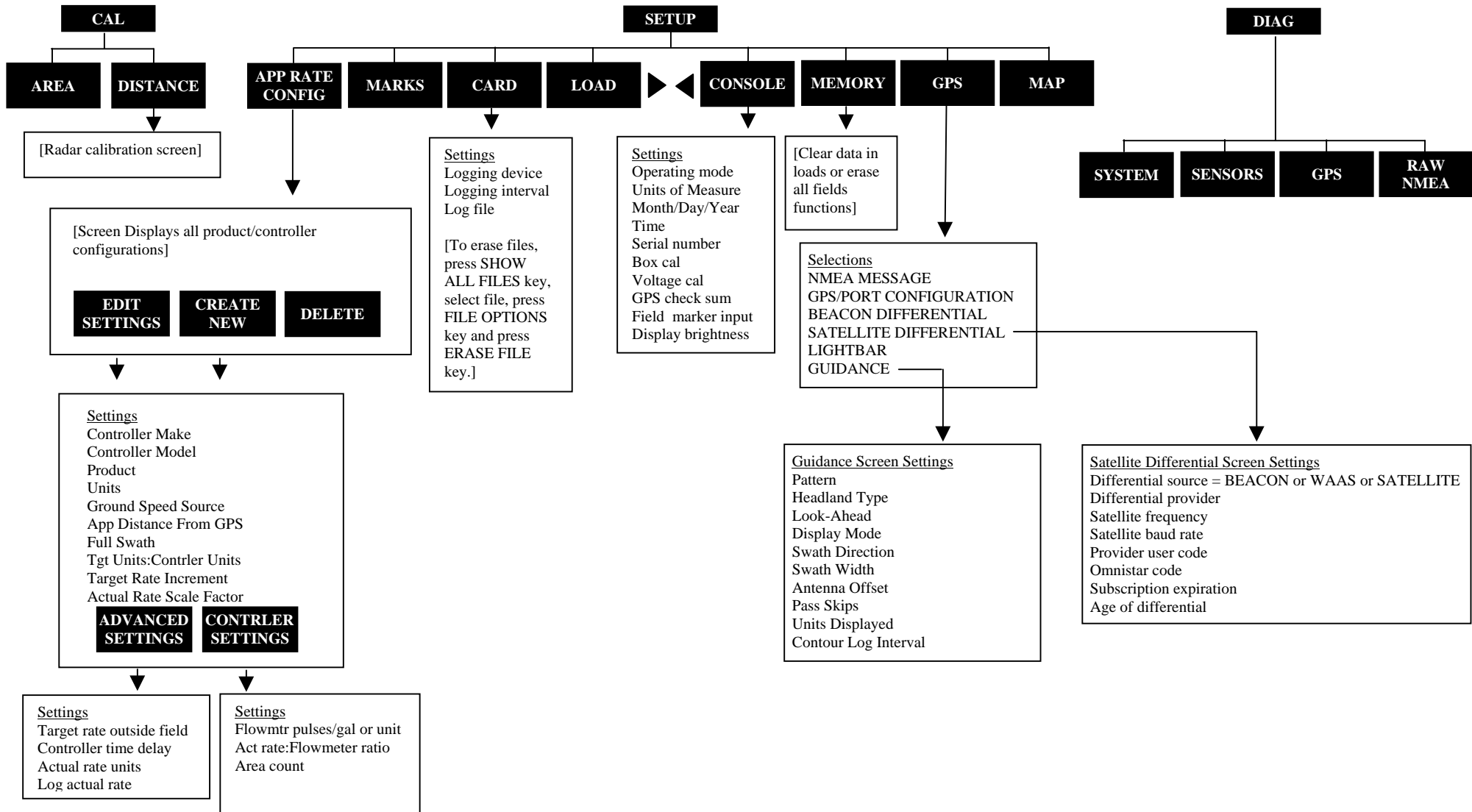
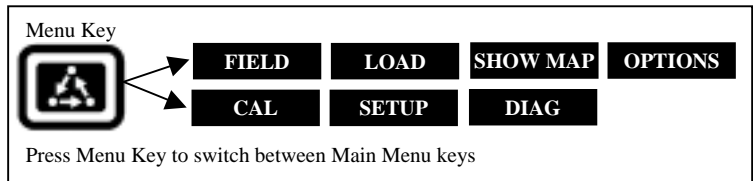


PFadvantage/PF3000/PF3000 Pro – Application Rate Mode - Menu Tree for Hiniker 8100 and 8150 controllers – March 2002



PF3000 and PF3000 Pro – Application Rate Mode - Menu Tree for Hiniker 8100 and 8150 controllers – March 2002



Note: These instructions pertain to PF firmware versions 4.00 or higher.

| Settings for Hinker 8100/8150 Controllers | |
|--|---|
| 1. | <p>Press SETUP key. Press APP RATE CONFIG key. Press CREATE NEW key. Set the following: Controller Make: Set to <i>FLOWMETER</i>. Controller Model: Set to <i>LIQUID</i> or <i>GRANULAR</i>. Product: Press EDIT key. You can select an existing product and press ACCEPT key or create a new product by pressing CREATE NEW key. Press EDIT NAME key and enter name of product. Use Left or Right Arrow keys to select a character. Use Up or Down Arrow key to change the character. Set every character and press ACCEPT key twice. Units: Usually set to <i>GALLONS</i>. Set to Units/Acre of application. Ground Speed Sensor: Set to <i>GPS</i>. Can not use <i>WHEEL</i>, <i>TRACK</i> or <i>RADAR</i> because #pulses/100 ft for Hiniker is too low for PF. App Distance From GPS: Ignore this setting. Full Swath: Set to width of applicator. Tgt Units:Contrler Units: Ignore this setting. Target Rate Increment: Ignore this setting. Actual Rate Scale Factor: Set to <i>1.000</i>.</p> |
| 2. | <p>Press CONTRLER SETTINGS key. Set the following: Flowmtr pulses/gal or unit: This setting must match the pulses per gallon on the decal of the Hiniker flow meter. If applying anhydrous ammonia this setting must match the pulses per pound on the decal of the Hiniker flow meter (Pounds of Actual N). Act rate:Flowmeter ratio: If want to record the carrier gallons/ac set to 1.000:1.</p> <p>If want to record product units/ac use following formula: $\frac{\# \text{ product units}}{1 \text{ gallon of carrier}} = \text{setting}$ Example: $\frac{.08 \text{ pint Treflan}}{1 \text{ gallon of carrier}} = .080 \text{ (Setting is .080:1)}$ If applying NH3, set to <i>1.000:1</i> if Hiniker reads lbs N/ac. Set to <i>4.220:1</i> if Hiniker reads gallons/ac (PF actual rate will be lbs N/ac). Area Count: Set to <i>Standard</i>.</p> |

| | |
|---|--|
| 3 | <p>Exit back to main screen. a)Press FIELD key twice. b)Select appropriate field and press VIEW CONFIG key. c)Select appropriate product/controller configuration and press ACTIVE ON/OFF key to check it as active.(All other configs must be unchecked first). d)Press ACCEPT key to accept field.</p> |
|---|--|

Press the EDIT key and use the Up or Down Arrow keys to change the setting. For most settings, you can set each digit by pressing the Left or Right Arrow key to select the digit. Use the Up or Down Arrow keys to set the digit.

| Area Counting |
|---|
| <p>The area count switch (located on bottom right of front panel) must be up and Hiniker must start applying for area to be on.</p> |