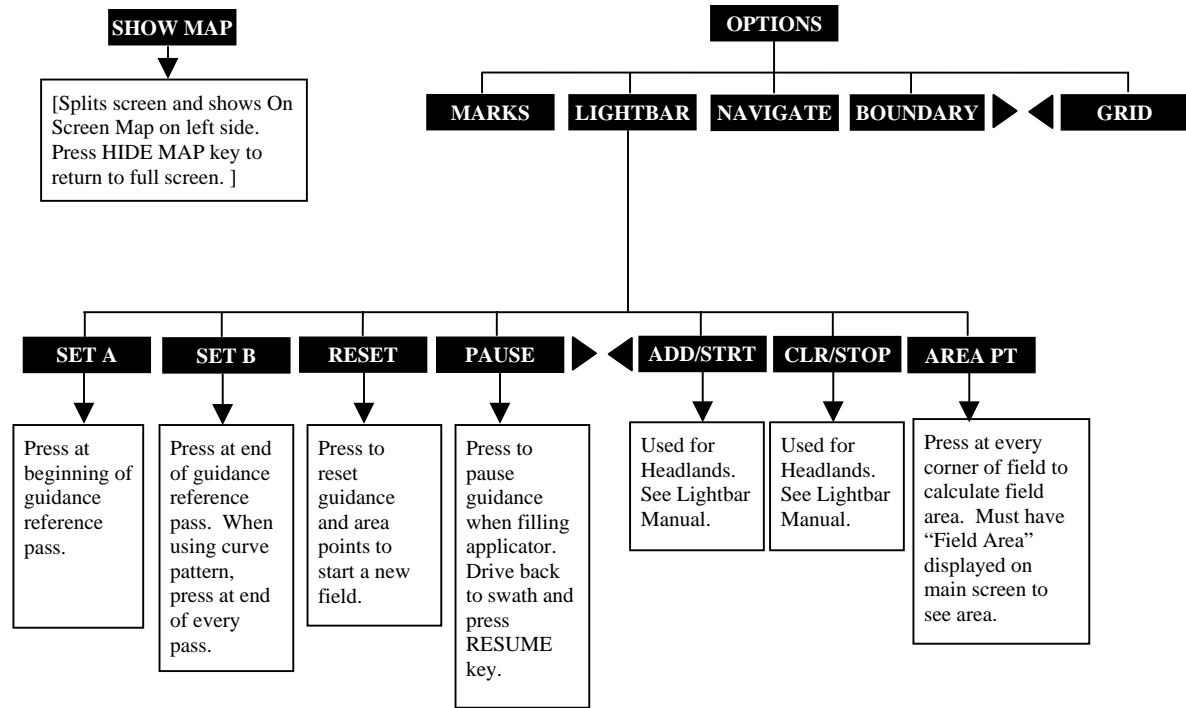
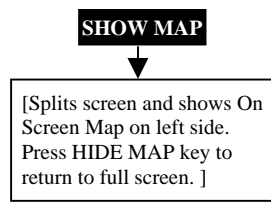
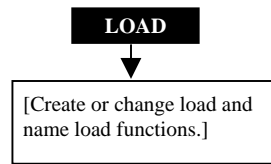
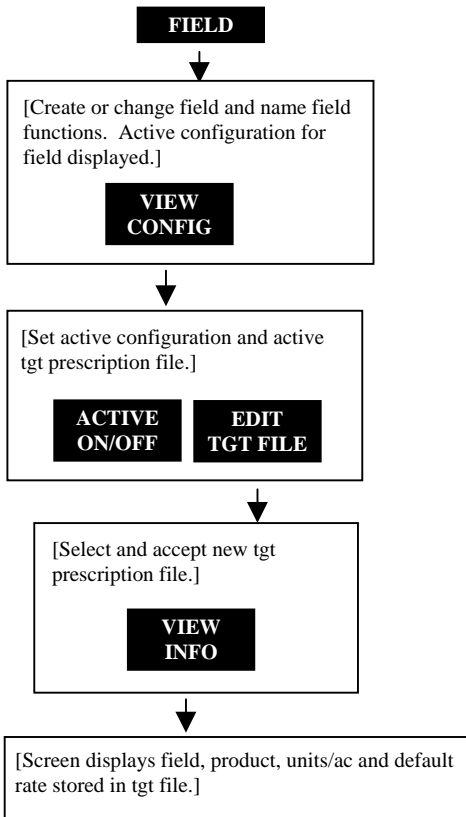
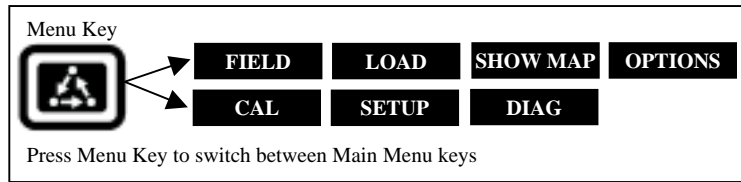
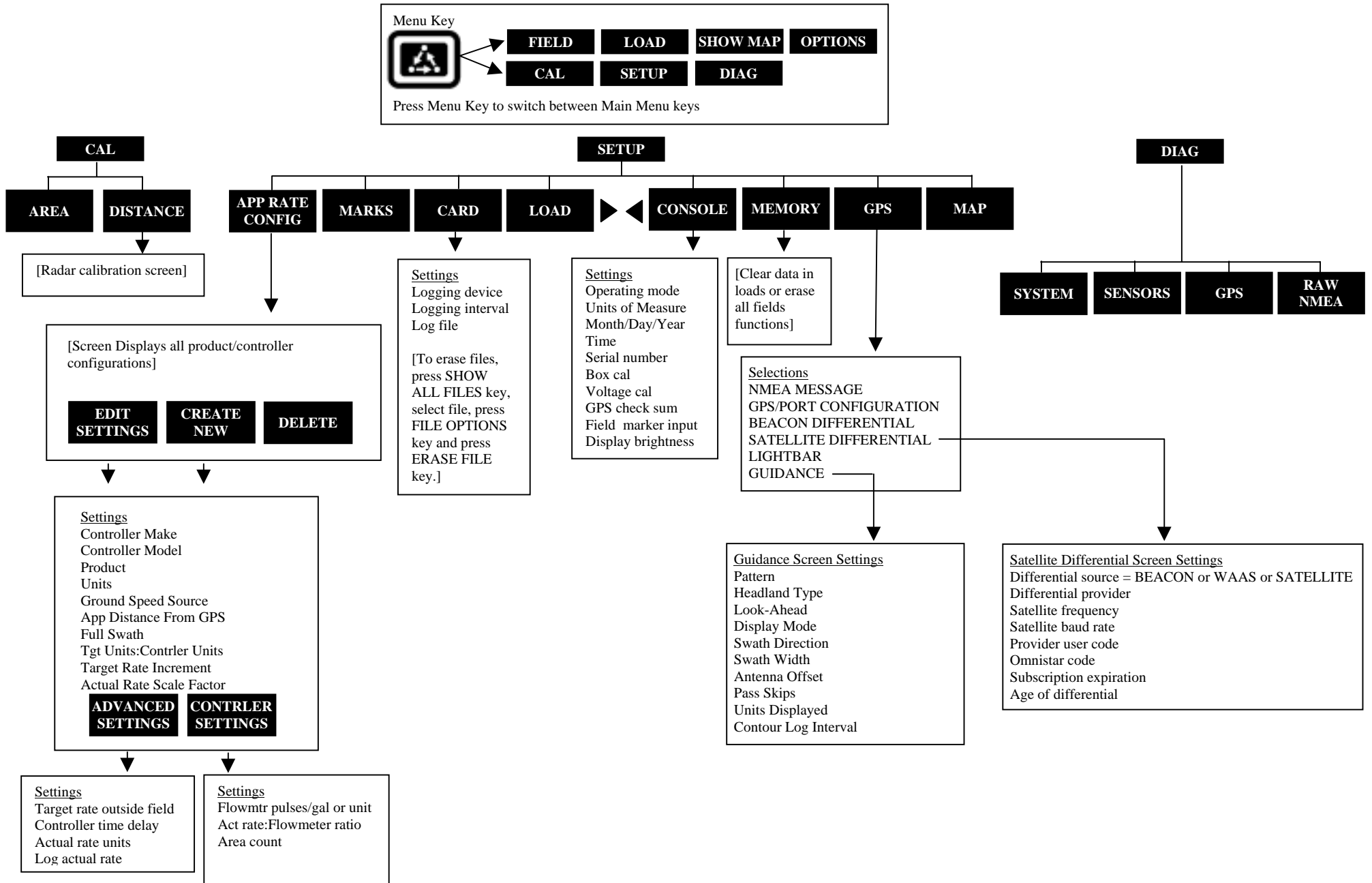


# PFadvantage/PF3000/PF3000 Pro – Application Rate Mode - Menu Tree for Krohne Flow Meter – March 2002



# PF3000 and PF3000 Pro – Application Rate Mode - Menu Tree for Krohne Flow Meter – March 2002



**Note:** These instructions pertain to PF firmware versions 4.00 or higher.

<b>Settings for Krohne Flow Meters</b>	
1.	<p>Press SETUP key. Press APP RATE CONFIG key. Press CREATE NEW key. Set the following:  <b>Controller Make:</b> Set to <i>FLOWMETER</i>.  <b>Controller Model:</b> Set to <i>LIQUID</i>.  <b>Product:</b> Press EDIT key. You can select an existing product and press ACCEPT key or create a new product by pressing CREATE NEW key. Press EDIT NAME key and enter name of product. Use Left or Right Arrow keys to select a character. Use Up or Down Arrow key to change the character. Set every character and press ACCEPT key twice.  <b>Units:</b> Set to <i>GALLONS</i> for gallons/acre.  <b>Ground Speed Sensor:</b> Set to <i>RADAR</i> or <i>GPS</i>.  <b>App Distance From GPS:</b> Ignore this setting.  <b>Full Swath:</b> Set to swath of applicator.  <b>Tgt Units:Contrler Units:</b> Ignore this setting.  <b>Target Rate Increment:</b> Ignore this setting.  <b>Actual Rate Scale Factor:</b> Set to <i>0.010</i>.</p>
2.	<p>Press CONTRLER SETTINGS key. Set the following:  <b>Flowmtr pulses/gal or unit:</b> Enter the number of pulses per gallon programmed in the Krohne flow meter. Acceptable range is 1-5 pulses/gallon.  <b>Act rate:Flowmeter ratio:</b> Set to <i>1.000:1</i>.  <b>Area Count:</b> Set to <i>Standard</i>.</p>
3	<p>Exit back to main screen.                      a)Press FIELD key twice.                      b)Select appropriate field and press VIEW CONFIG key.                      c)Select appropriate product/controller configuration and press ACTIVE ON/OFF key to check it as active.(All other configs must be unchecked first).                      d)Press ACCEPT key to accept field.</p>

When a setting is highlighted, press the EDIT key and use the Up or Down Arrow keys to change the setting. For most settings, you can set each digit by pressing the Left or Right Arrow key to select the digit. Use the Up or Down Arrow keys to set the digit.

<b>Area Counting</b>
<p>The area count switch (located on bottom right of front panel) must be up. When application flow starts area will automatically start counting.</p>

<b>Selecting display items</b>
<p>You can display four different items on the main operating screen. To change what is displayed, press the key to the right of the line you want to change. Scroll through the list of display items shown on the bottom by pressing the <u>bottom</u> left and right arrow keys. Press the key on the bottom to pick the display item you want.</p> <p><u>Useful display items</u>  <b>Actual Rate</b>  <b>Ground Speed</b>  <b>Area</b>  <b>Total Units</b>  <b>Actual GPM</b></p>