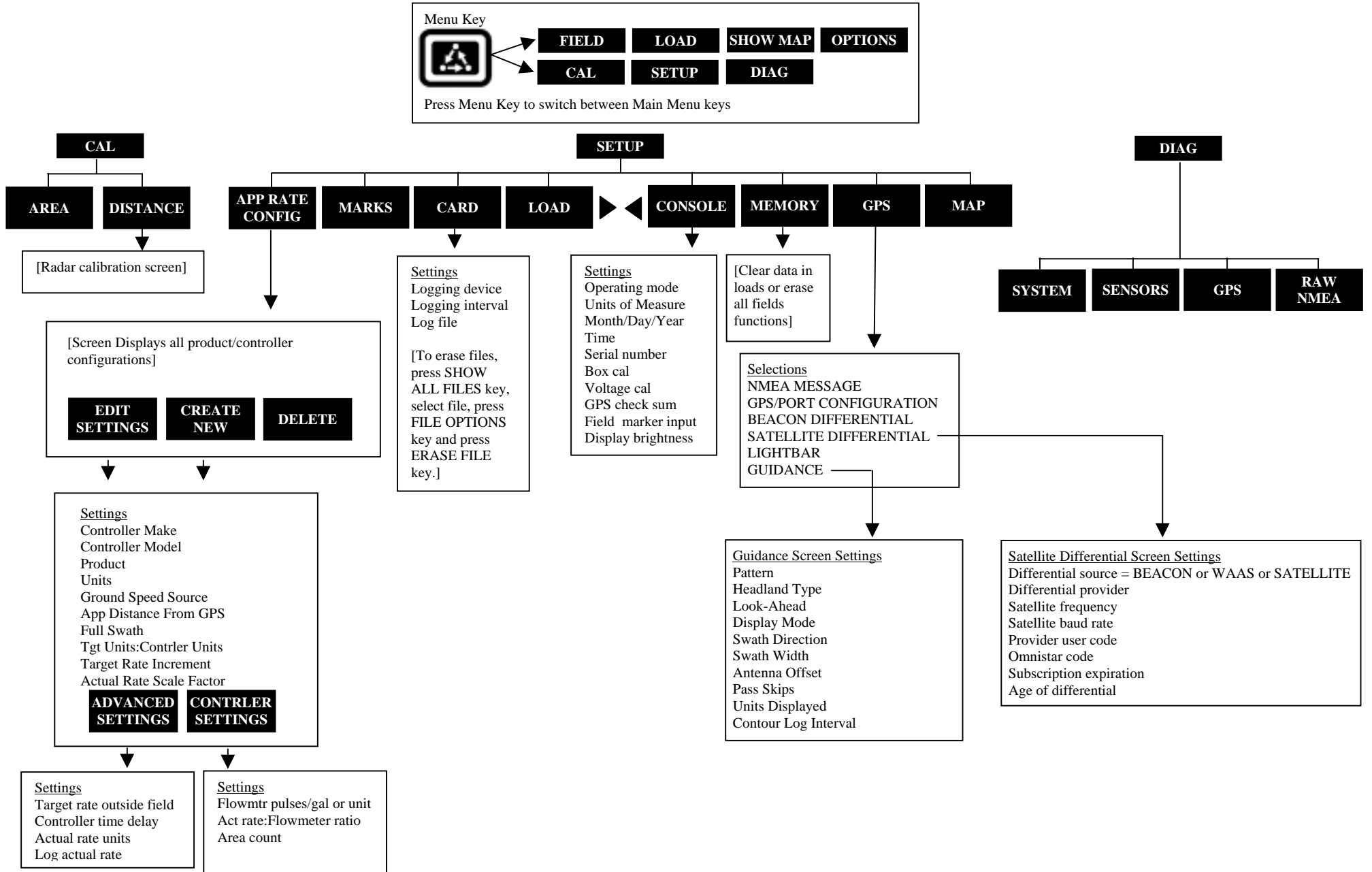


PF3000 and PF3000 Pro – Application Rate Mode - Quick Reference Menu Tree for Raven models without serial ports – March 2002



Note: These instructions pertain to when the PF is connected to a Raven that does not have a serial port. These instructions pertain to PF firmware versions 4.00 or higher.

Settings for Raven Controllers

1. Press SETUP key. Press APP RATE CONFIG key. Press CREATE NEW key. Set the following:
Controller Make: Set to *FLOWMETER*.
Controller Model: Set to *LIQUID* or *GRANULAR*.
Product: Press EDIT key. You can select an existing product and press ACCEPT key or create a new product by pressing CREATE NEW key. Press EDIT NAME key and enter name of product. Use Left or Right Arrow keys to select a character. Use Up or Down Arrow key to change the character. Set every character and press ACCEPT key twice.
Units: Usually set to *GALLONS*. Set to Units/Acre of application.
Ground Speed Sensor: Set to *RADAR* or *GPS*.
App Distance From GPS: Ignore this setting.
Full Swath: Set to width of applicator.
Tgt Units:Contrler Units: Ignore this setting.
Target Rate Increment: Ignore this setting.
Actual Rate Scale Factor: Set to *1.000*. If applying granular you may have to set this to *0.100*. PF will alert you to lower scale factor if this is the case.
 When the data is mapped, the rate will be 1/10th of the real rate when the Actual Rate Scale Factor is 0.100. It will be 1/100th of the real rate when the Actual Rate Scale Facotr is 0.010. The rate actually applied and rate that appears on PF is unaffected by this setting.

2. Press CONTRLER SETTINGS key. Set the following:
Flowmtr pulses/gal or unit: If applying liquid, enter the Meter Cal number on Raven/10. If applying a granular product, enter the Spreader Constant number (1st press of Meter Cal key on Raven).
Act rate:Flowmeter ratio: If want to record the carrier gallons/ac set to 1.000:1.

 If want to record product units/ac use following formula:

$$\frac{\# \text{ product units}}{1 \text{ gallon of carrier}} = \text{setting}$$
 Example: $\frac{.08 \text{ pint Treflan}}{1 \text{ gallon of carrier}} = .080$ (Setting is .080:1)
 If applying NH3, set to *1.000:1* if Raven reads lbs N/ac. Set to *4.220:1* if Raven reads gallons/ac (PF actual rate will be lbs N/ac).
 If applying granular, set to:
 Prod. Density (2nd press-Meter Cal key on Raven) x .10 = setting
 Actual rate on PF will be 1/100th of real actual rate.
Area Count: Set to *Reversed*.
3. Exit back to main screen.
 a)Press FIELD key twice.
 b)Select appropriate field and press VIEW CONFIG key.
 c)Select appropriate product/controller configuration and press ACTIVE ON/OFF key to check it as active.(All other configs must be unchecked first).
 d)Press ACCEPT key to accept field.

Press the EDIT key and use the Up or Down Arrow keys to change the setting. For most settings, you can set each digit by pressing the Left or Right Arrow key to select the digit. Use the Up or Down Arrow keys to set the digit.

Area Counting

The area count switch (located on bottom right of front panel) must be up and Raven must start applying for area to be on.