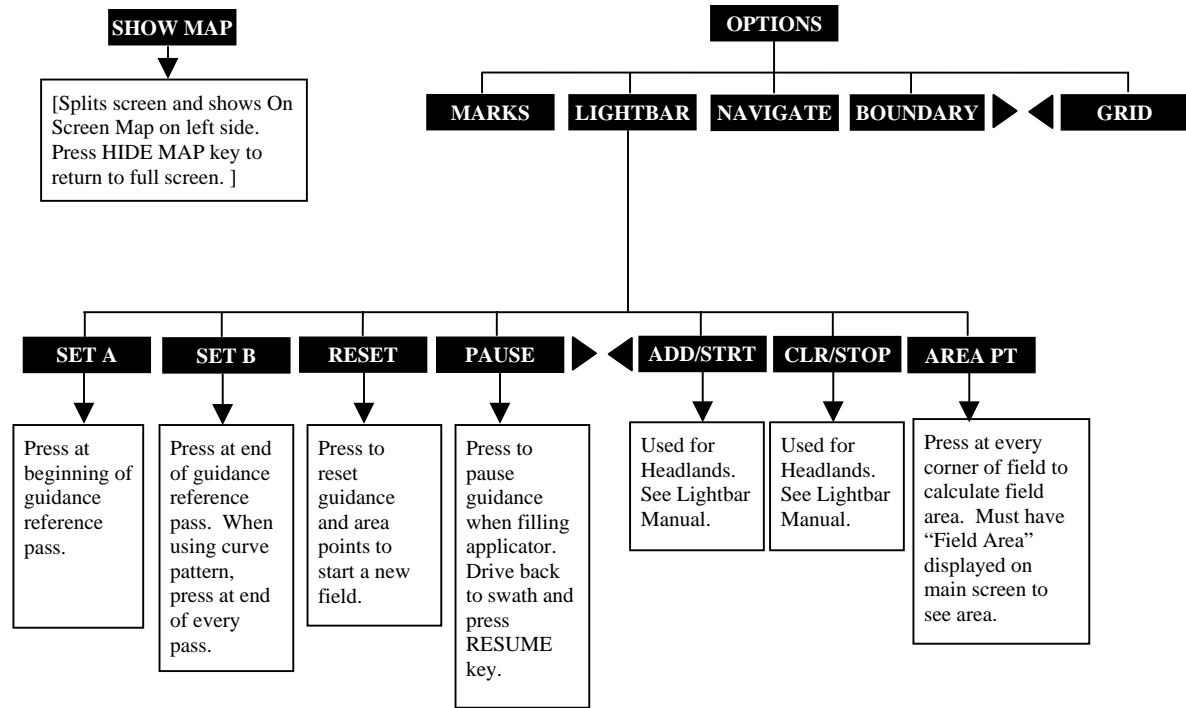
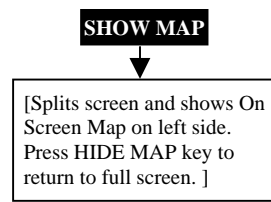
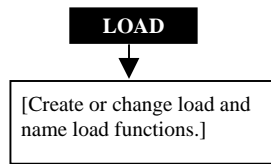
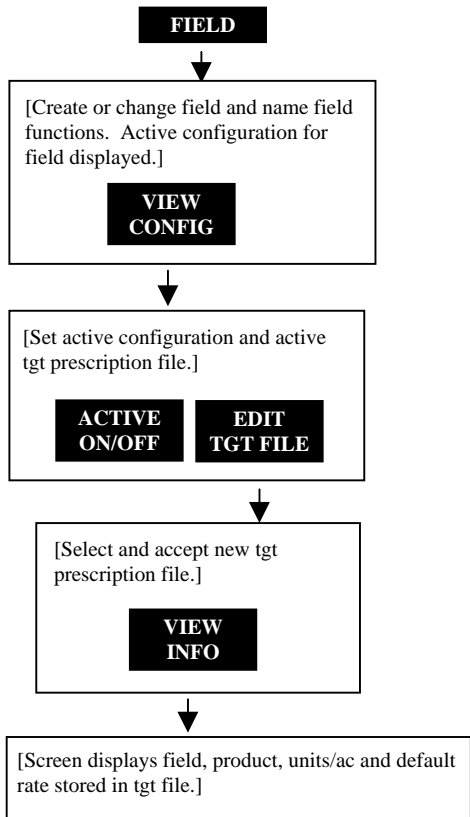
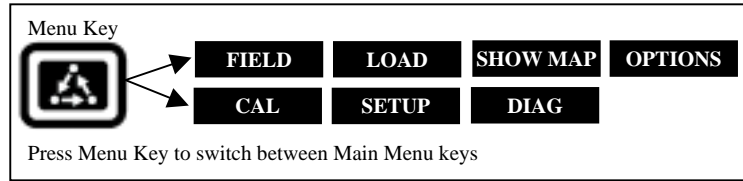
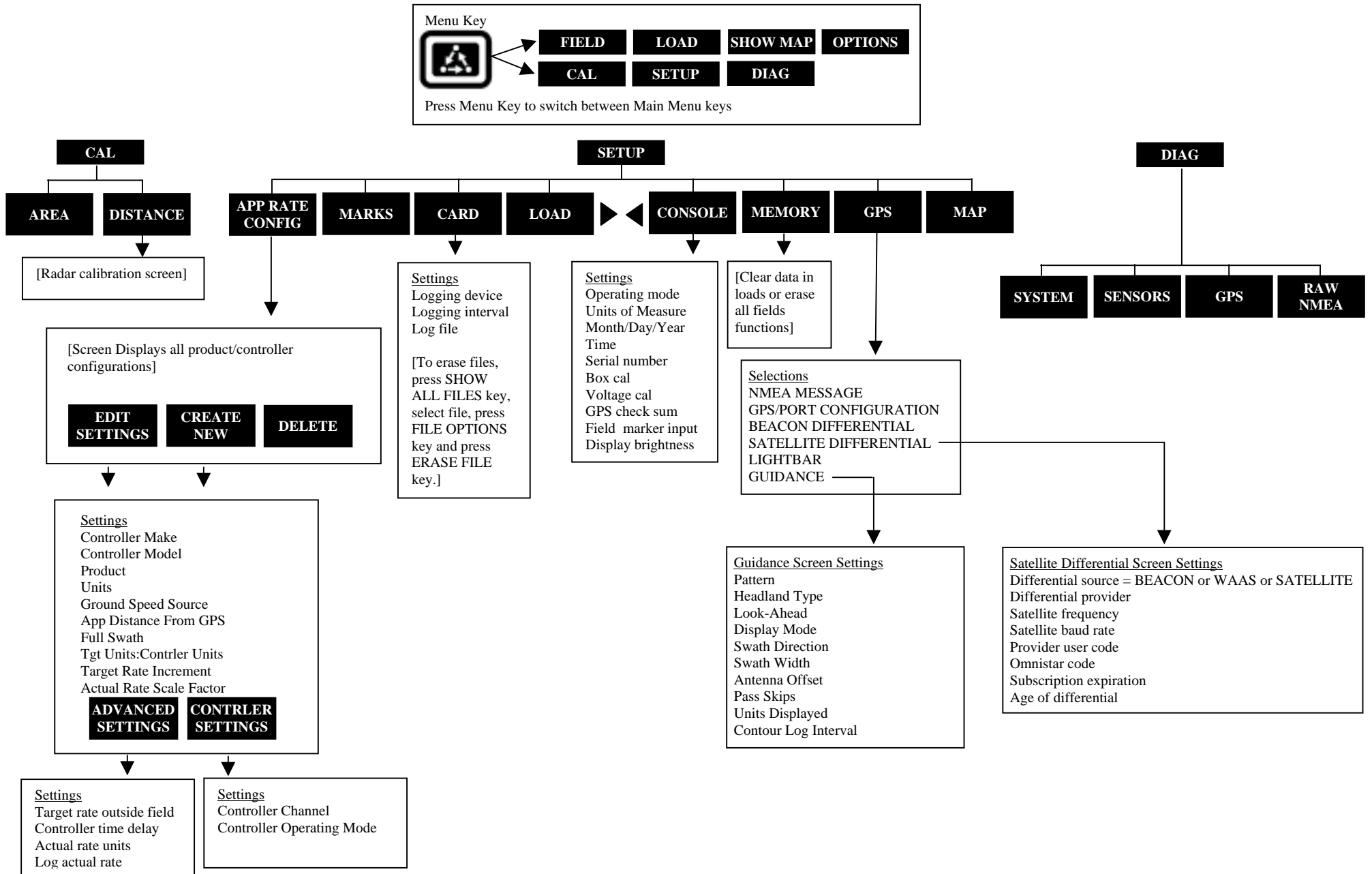


PFadvantage/PF3000/PF3000 Pro – Application Rate Mode - Menu Tree for Raven models with serial ports – March 2002



PF3000 and PF3000 Pro – Application Rate Mode - Menu Tree for Raven models with serial ports – March 2002



Note: These instructions pertain to when the PF is connected to a Raven with a serial port cable (Cable Part Number: 2000944). These instructions pertain to PF firmware versions 4.00 or higher.

Settings for Raven Controllers

1. Press SETUP key. Press APP RATE CONFIG key. Press CREATE NEW key. Set the following:
Controller Make: Set to *RAVEN*.
Controller Model: Set to your Raven model.
Product: Press EDIT key. You can select an existing product and press ACCEPT key or create a new product by pressing CREATE NEW key. Press EDIT NAME key and enter name of product. Use Left or Right Arrow keys to select a character. Use Up or Down Arrow key to change the character. Set every character and press ACCEPT key twice.
Units: Usually set to *GALLONS*. Set to Units/Acre of application.
Ground Speed Sensor: Set to *RADAR* or *GPS*. SERIAL is not recommended. Note: This setting affects all configurations.
App Distance From GPS: Set to distance between where product exits applicator and position of GPS antenna on vehicle. Example: If spray boom is 20 feet behind GPS antenna set to 20 ft back.
Full Swath: Ignore setting. Swath comes from serial port of Raven
Tgt Units:Contrler Units: Normally set to *1:1.0000*. This ratio is used to convert the units in a target file (.tgt) to the units of application. Example: Tgt file in pints/ac of Treflan, Raven applies gallons/ac. If tank mix is 1 pint of Treflan / 10 gallon water, then set to 1:10.0000.
Target Rate Increment: Determines increment value by which you can change the manual target rate with each press of Up or Down arrow keys.
Actual Rate Scale Factor: Use chart below for setting.

Avg. Speed	Swath	Application Rate between	Scale Factor
0-25 mph	0-80 ft	0-10 units/ac	1.000
0-10 mph	0-80 ft	11-100 units/ac	1.000
11-15 mph	0-50 ft	11-100 units/ac	1.000
11-15 mph	51-80 ft	11-100 units/ac	0.100
16-25 mph	0-80 ft	11-100 units/ac	0.100
0-25 mph	0-80 ft	101-500 units/ac	0.100
0-10 mph	0-80 ft	501-1000 units/ac	0.100
11-15 mph	0-50 ft	501-1000 units/ac	0.100
11-15 mph	51-80 ft	501-1000 units/ac	0.010
16-25 mph	0-80 ft	501-1000 units/ac	0.010
0-25 mph	0-80 ft	1001+ units/ac	0.010

- When the data is mapped, the rate will be 1/10th of the real rate when the Actual Rate Scale Factor is 0.100. It will be 1/100th of the real rate when the Actual Rate Scale Facotr is 0.010. The rate actually applied and rate that appears on PF is unaffected by this setting.
2. If you have a Sidekick, 440, 450, 460, or 660 ignore this step, otherwise press CONTRLER SETTINGS key. Set the following:
Controller Channel: Set to channel of Raven to record or control rate.

 If you have a 660, 700, 710 or 760, the setting below will appear on this screen.
Controller Operating Mode: Set to *LIQUID* or *GRANULAR* according to type of product.
3. Press EXIT key to return to screen with ADVANCED SETTINGS key on bottom. Press the ADVANCED SETTINGS key.
Target Rate Outside Field: This only pertains to using a target file. Set to *ZERO* if want rate outside field to be zero. Set to *USE LAST* if want rate to be the last rate used at the time the vehicle is detected outside the field. This is useful when experiencing problems with the vehicle being falsely detected outside of the field during the outside pass. Set to *TGT DEFAULT* if want rate outside field to be the default rate stored in the target rate file.
Controller Time Delay: Set to 3 seconds. This is delay of controller to change application equipment to new rate + 2 seconds.
Actual Rate Units: Ignore this setting.
Log Actual Rate: Set to *YES* to log actual rate to card. Set to *NO*, otherwise.
4. Exit back to main screen.
 a) Press FIELD key twice.
 b) Select appropriate field and press VIEW CONFIG key.
 c) Select appropriate product/controller configuration and press ACTIVE ON/OFF key to check it as active.(All other configs must be unchecked first).
 d) If you will be using a target file, press EDIT TGT FILE key, otherwise press EXIT key and skip to step f.
 e) Select target file. Press VIEW INFO key to ensure it is the correct one. After exiting view info screen, press ACCEPT key. Press EXIT key.
 f) Press ACCEPT key to accept field.

PF3000 and PF3000 Pro – Quick Reference Setup Instructions for all Raven models with serial ports – March 2002

Note: To setup the Raven serial port go under the Data Menu key: bAUd=9600, triG=1, Unit=sec, dLoG=On (rATE=Off to turn off rate change alarm)

Press the EDIT key and use the Up or Down Arrow keys to change the setting. For most settings, you can set each digit by pressing the Left or Right Arrow key to select the digit. Use the Up or Down Arrow keys to set the digit.

Setting the Target Rate

1	<p>The display item “Target Rate” must be displayed on the main screen to set the rate.</p> <p>Arrow symbols on the line displaying target rate indicate that this display item is selected for changing. Press the key to the right of the line displaying target rate if you do not see these arrows. Press it again to deselect the line (remove the box) but keep the arrow symbols.</p>
2	<p>You can either set a manual rate or use a target file to automatically control the rate based on the vehicle position in the field.</p> <p><u>Setting a manual rate</u></p> <ol style="list-style-type: none"> a) Press Right Arrow key to highlight “man” (“m” if viewing on screen map). b) Use the Up or Down Arrow keys to set the manual rate. c) If you want to change how much the rate changes with each arrow press refer to step 1 on other side of sheet and edit the “Target Rate Increment” setting. <p><u>Using a target file and setting an automatic rate</u></p> <ol style="list-style-type: none"> a) Press Left Arrow key to highlight “auto” (“a” if viewing on screen map). b) You must have a target file (.tgt) selected for the field, otherwise the PF will not control the rate of the Raven. Refer to step 4 on other side on how to set the Target File. <p>You can switch between auto and man whenever you are on the main screen and Target Rate is selected for changing.</p> <p><u>Setting the PF to NOT control the rate (record rate only)</u></p> <p>Set the Target Rate to “auto” and leave the Target File setting on “NONE”.</p>

Area Counting

The area count switch (located on bottom right of front panel) must be up and Raven must start applying for area to be on.