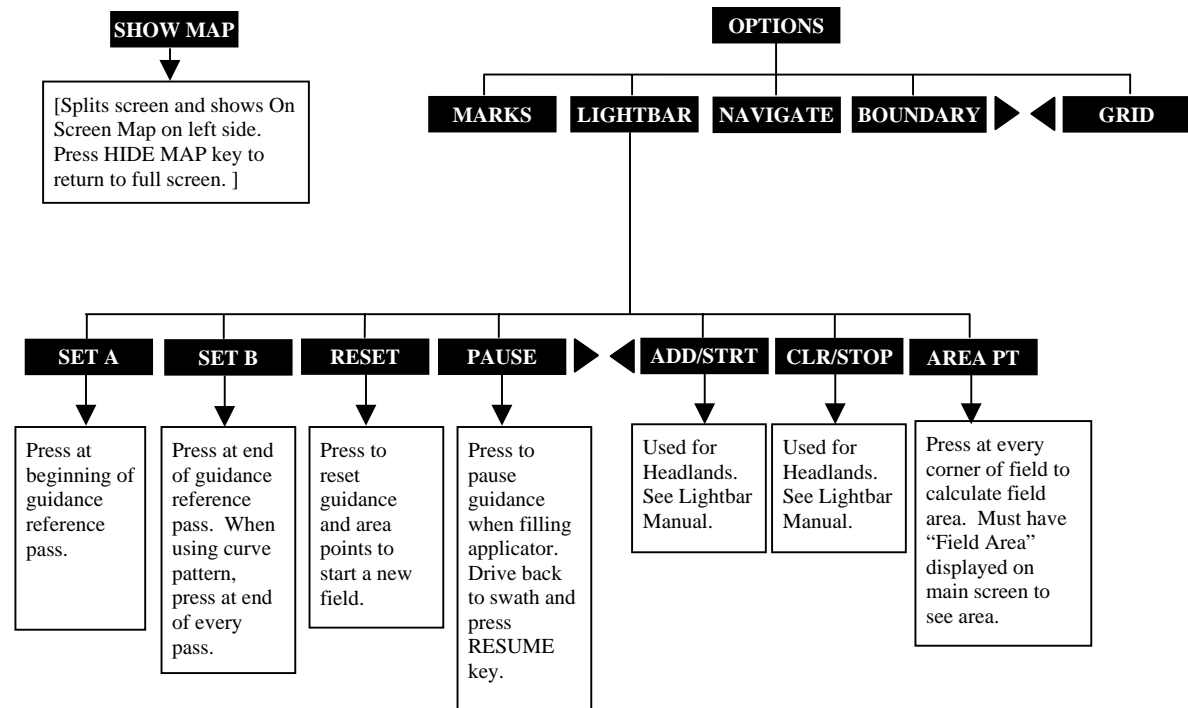
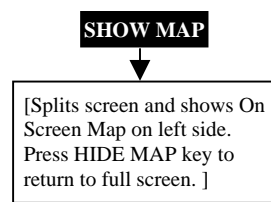
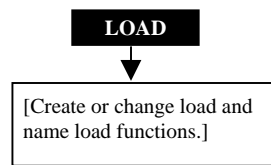
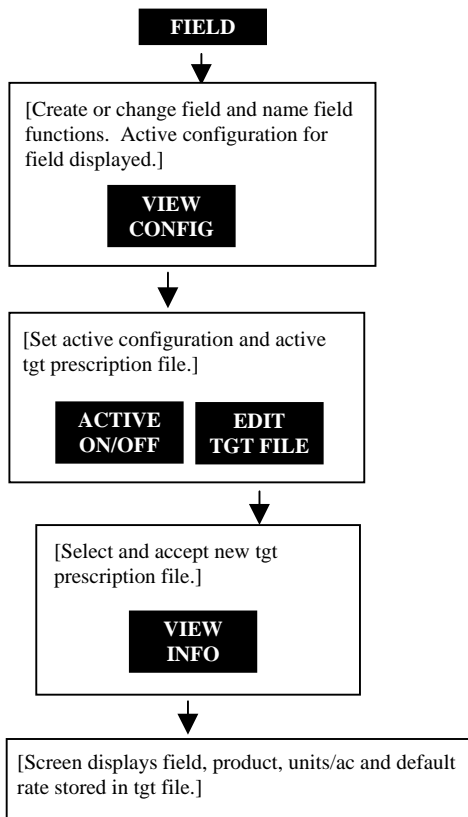
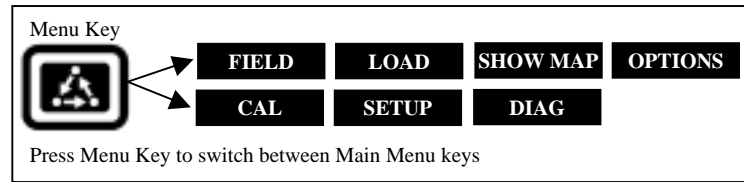
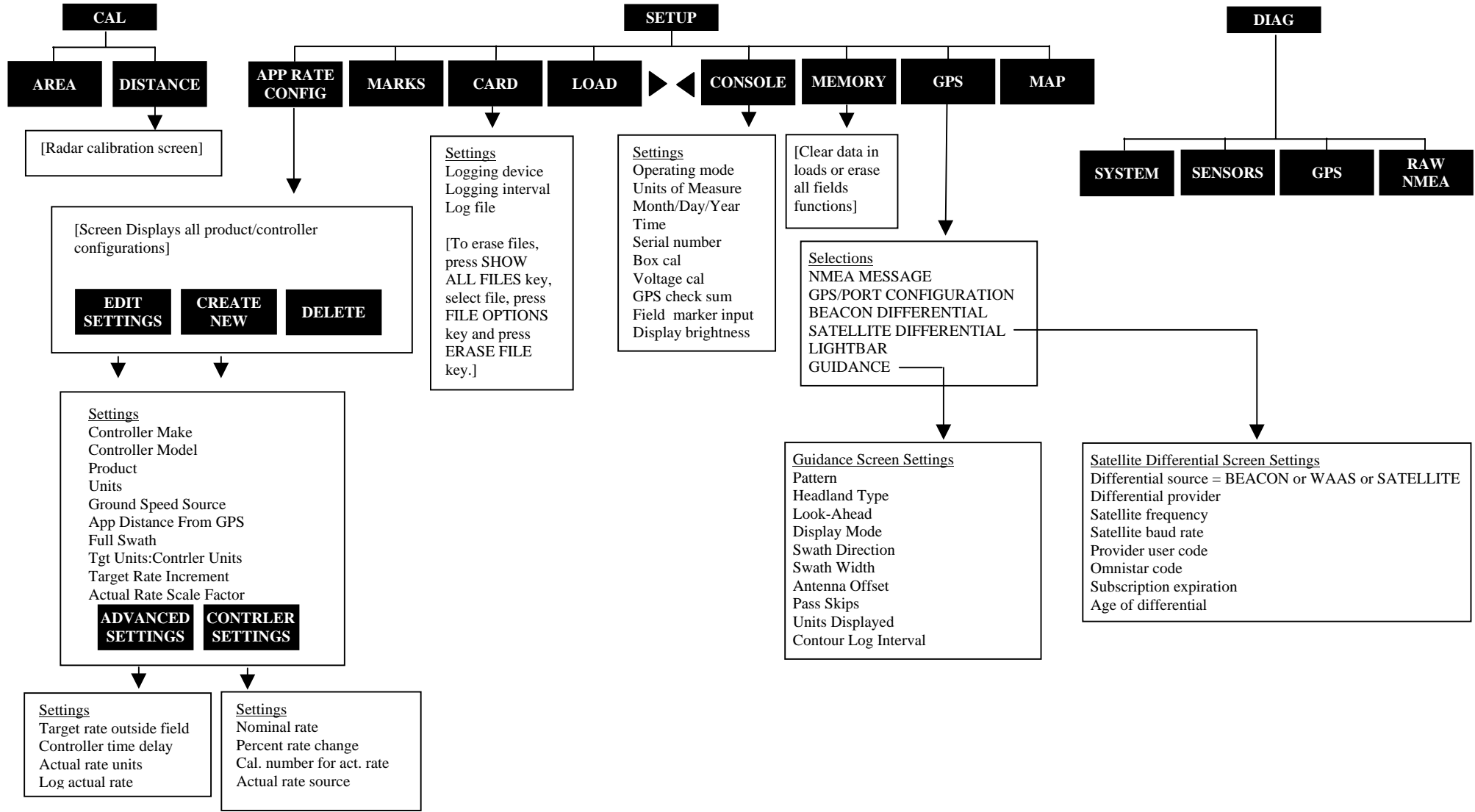
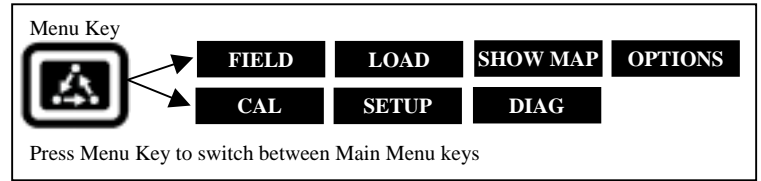


**PFadvantage/PF3000/PF3000 Pro – Application Rate Mode - Menu Tree for Rawson or New Leader controllers – March 2002**



# PF3000 and PF3000 Pro – Application Rate Mode - Menu Tree for Rawson or New Leader controllers – March 2002



**Note:** These instructions pertain to PF firmware versions 4.00 or higher.

<i>Settings for Rawson and New Leader Controllers</i>	
1.	<p>Press SETUP key. Press APP RATE CONFIG key. Press CREATE NEW key. Set the following:  <b>Controller Make:</b> Set to RAWSON or NEW LEADER.  <b>Controller Model:</b> Set to your controller model.  <b>Product:</b> Press EDIT key. You can select an existing product and press ACCEPT key or create a new product by pressing CREATE NEW key. Press EDIT NAME key and enter name of product. Use Left or Right Arrow keys to select a character. Use Up or Down Arrow key to change the character. Set every character and press ACCEPT key twice.  <b>Units:</b> Set to Units/Acre of application.  <b>Ground Speed Sensor:</b> Set to RADAR or GPS. Note: This setting affects all configurations.  <b>App Distance From GPS:</b> Set to distance between where product exits applicator and position of GPS antenna on vehicle. Example: If planter is 20 feet behind GPS antenna set to 20 ft back.  <b>Full Swath:</b> Set to full swath of applicator.  <b>Tgt Units: Contrler Units:</b> Normally set to 1:1.0000. This ratio is used to convert the units in a target file (.tgt) to the units of application. Example: Tgt file in pints/ac of Treflan, controller applies gallons/ac. If tank mix is 1 pint of Treflan / 10 gallon water, then set to 1:10.0000.  <b>Target Rate Increment:</b> Determines increment value by which you can change the manual target rate with each press of Up or Down arrow keys.  <b>Actual Rate Scale Factor:</b> Set to 1.000</p>
2.	<p>Press CONTRLER SETTINGS key. Set the following:  <b>Nominal Rate:</b> If PF not controlling rate, ignore setting.                      If PF controlling rate, set equal to nominal rate of contrl. (Mode key):                      “Sds/A=x,xxx,xxx” setting in Rawson plant mode or                      “Rate=xxxx.x Lb/A” setting in Rawson fert mode (dry) or                      “Rate=xx.x Gal/A” setting in Rawson fert mode (liquid) or                      “Yield=xxxx Lb/A (or Ton/A if lime)” setting in New Leader                      Note: If change modes on controller, must change nominal rate on PF.  <b>Percent Rate Change:</b> Set equal to “Steps x.x%” of contrl. (Mode key)                      Common settings are 4.00% for Rawson plant mode, 6.66% for New Leader or Rawson fert mode (Steps x.x% may not be setting in cont.)</p>

<p><b>Cal. number for act. rate:</b>  <u>Rawson – planting mode</u> - Press Mode key on controller to view the “# of seeds=xxx.x” and “No. of Rows=xx” setting. Use formula to determine cal. number.  <math display="block">\frac{\# \text{ of seeds}}{5} \times \text{No. of rows} \times 10 = \text{cal. number}</math>  <u>Rawson – fertilizer mode (liquid)</u> - Press Mode key on controller to view “Pump Disp x.xxxx”, “RateSetting xx.x” and “Ratio=xx.xx:1” setting. Use formula to determine cal. number.  <math display="block">\frac{\text{Pump Disp} \times \text{Rate Setting} \times 10000}{\text{Ratio}} = \text{cal. num}</math>  <u>Rawson – fertilizer mode (dry)</u> - Press Mode key on controller to view “Del. Rate=xxx.xx”, “Mat'l=xxx.x Lb”, “Rate Setting xx.xx” and “Ratio=xx.xx:1” setting. Use formula to determine cal. num.  <math display="block">\frac{\text{Del. Rate} \times \text{Mat'l} \times \text{Rate Setting} \times .5787}{\text{Ratio}} = \text{cal. number}</math>                      Note: See note for New Leader  <u>New Leader</u> - Press Mode key on controller to view “FeedGate=xx.xx”, “Mat'l=xxx.x Lb”, and “Conv. Rate=x.xxx” settings. Use formula to determine cal. number.  <math display="block">\frac{\text{Feed Gate} \times \text{Mat'l} \times \text{Conv. Rate} \times 1000 \text{ (5 if lime)}}{6.1} = \text{cal. number}</math>                      Note: Actual rate will be 1/10<sup>th</sup> of real actual rate (except for lime). If cal. number is over 6400, divide cal. number by 10. Ex. 7000/10=700 (act. rate will be 1/100<sup>th</sup> of real actual rate). If gate setting changes, switch configurations and enter new cal. number.  <b>Actual Rate Source:</b> Set to DRIVE RPM. If you are planting and have a Dickey-john Seed Manager monitor and you want to get the actual rate from it, set this to SEED MANGR.</p>
--

**PF3000 and PF3000 Pro – Quick Reference Setup Instructions for all Rawson and New Leader models – March 2002**

3	<p>Press EXIT key to return to screen with ADVANCED SETTINGS key on bottom. Press the ADVANCED SETTINGS key.</p> <p><b>Target Rate Outside Field:</b> This only pertains to using a target file.          Set to <i>ZERO</i> if want rate outside field to be zero.          Set to <i>USE LAST</i> if want rate to be the last rate used at the time the vehicle is detected outside the field. This is useful when experiencing problems with the vehicle being falsely detected outside of the field during the outside pass.          Set to <i>TGT DEFAULT</i> if want rate outside field to be the default rate stored in the target rate file.</p> <p><b>Controller Time Delay:</b> Set to 3 seconds. This is delay of controller to change application equipment to new rate + 2 seconds.</p> <p><b>Actual Rate Units:</b> Ignore this setting.</p> <p><b>Log Actual Rate:</b> Set to <i>YES</i> to log actual rate to card. Set to <i>NO</i>, otherwise.</p>
4	<p>Exit back to main screen.</p> <p>a) Press FIELD key twice.</p> <p>b) Select appropriate field and press VIEW CONFIG key.</p> <p>c) Select appropriate product/controller configuration and press ACTIVE ON/OFF key to check it as active. (All other configs must be unchecked first).</p> <p>d) If you will be using a target file, press EDIT TGT FILE key, otherwise press EXIT key and skip to step f.</p> <p>e) Select target file. Press VIEW INFO key to ensure it is the correct one. After exiting view info screen, press ACCEPT key. Press EXIT key.</p> <p>f) Press ACCEPT key to accept field.</p>

2	<p>Note: Set Rawson or New Leader to GPS Mode (under Mode key) to enable serial port communication with controller.</p> <p>On the PF, you can either set a manual rate or use a target file to automatically control the rate based on the vehicle position in the field.</p> <p><u>Setting a manual rate</u></p> <p>a) Press Right Arrow key to highlight “man” (“m” if viewing on screen map).</p> <p>b) Use the Up or Down Arrow keys to set the manual rate.</p> <p>c) If you want to change how much the rate changes with each arrow press refer to step 1 on other side of sheet and edit the “Target Rate Increment” setting.</p> <p><u>Using a target file and setting an automatic rate</u></p> <p>a) Press Left Arrow key to highlight “auto” (“a” if viewing on screen map).</p> <p>b) You must have a target file (.tgt) selected for the field, otherwise the PF will not control the rate of the Raven. Refer to step 4 on other side on how to set the Target File.</p> <p>You can switch between auto and man whenever you are on the main screen and Target Rate is selected for changing.</p> <p><u>Setting the PF to NOT control the rate (record rate only)</u>          Set the Target Rate to “auto” and leave the Target File setting on “NONE”.</p>
---	--

Press the EDIT key and use the Up or Down Arrow keys to change the setting. For most settings, you can set each digit by pressing the Left or Right Arrow key to select the digit. Use the Up or Down Arrow keys to set the digit.

<b><i>Setting the Target Rate</i></b>	
1	<p>The display item “Target Rate” must be displayed on the main screen to set the rate.</p> <p>Arrow symbols on the line displaying target rate indicate that this display item is selected for changing. Press the key to the right of the line displaying target rate if you do not see these arrows. Press it again to deselect the line (remove the box) but keep the arrow symbols.</p>

<b><i>Area Counting</i></b>
<p>The area count switch (located on bottom right of front panel) must be up and the Drive must be turning for area to be on.</p>