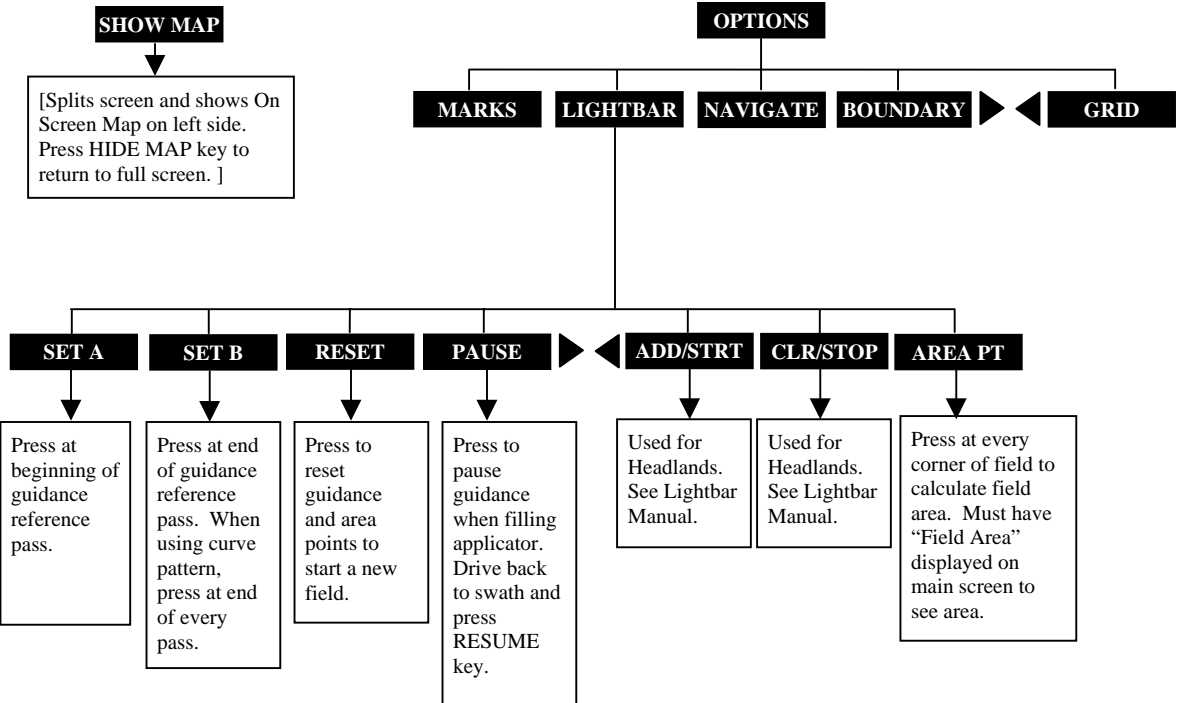
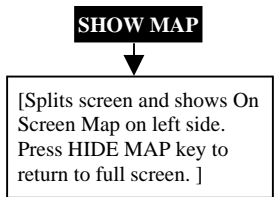
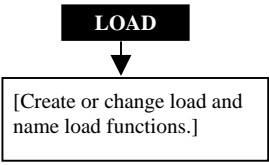
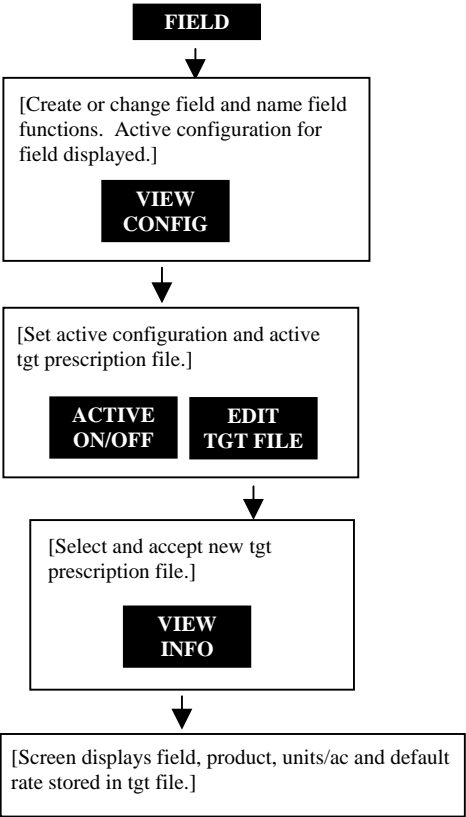
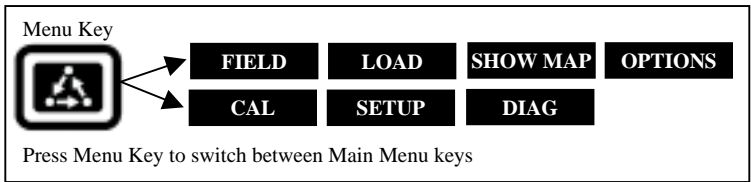
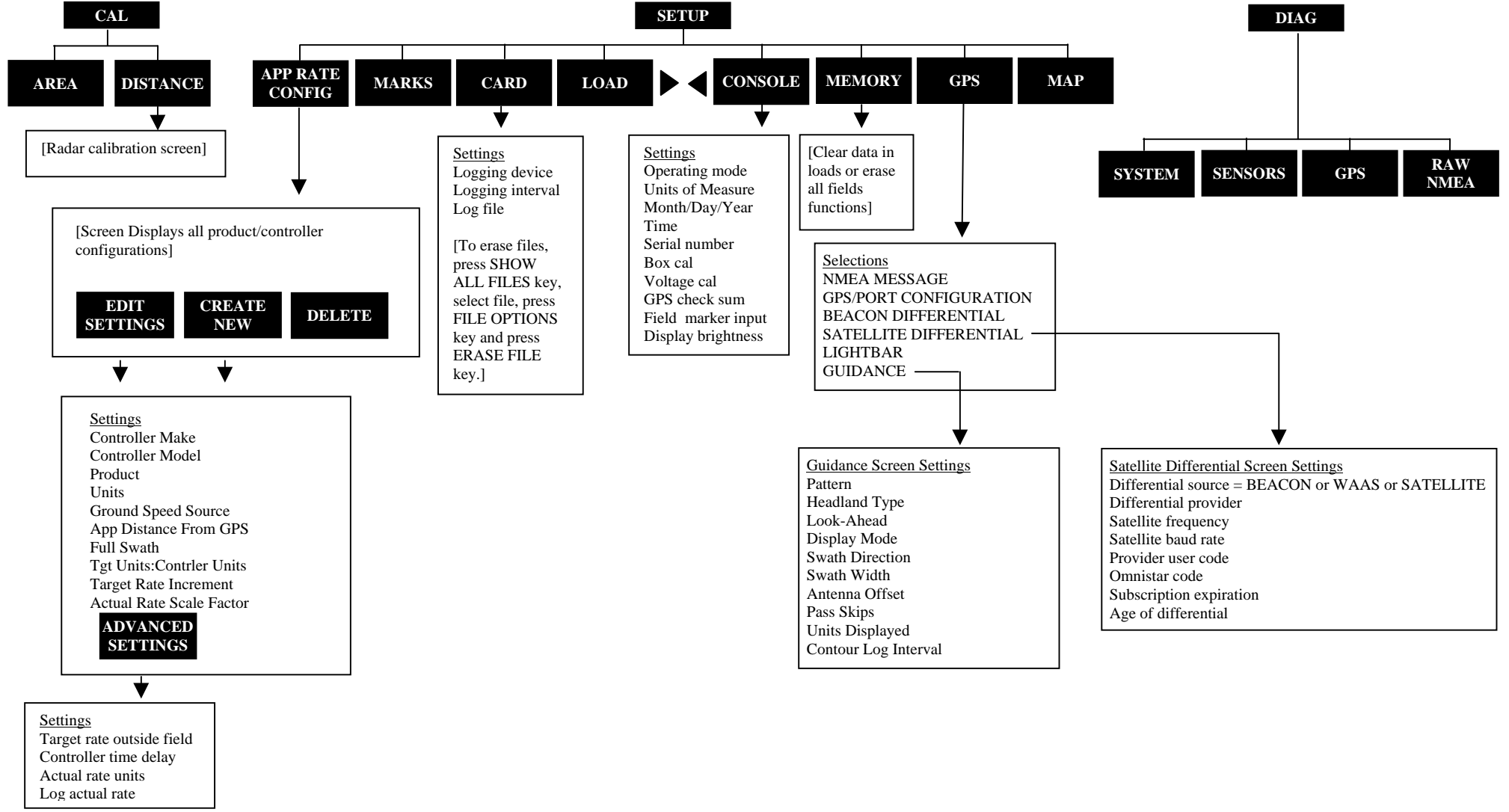
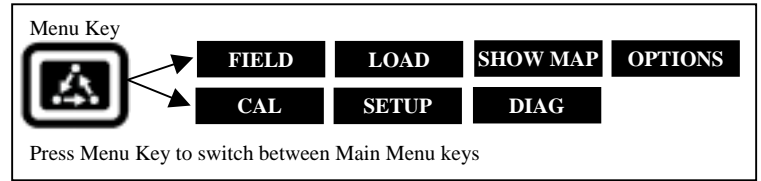


PFadvantage/PF3000/PF3000 Pro – Application Rate Mode - Menu Tree for DICKEY-john Seed Manager or Vanguard WM-2500 (PIC) – March 2002



PF3000 and PF3000 Pro – Application Rate Mode - Menu Tree for DICKEY-john Seed Manager or Vanguard WM-2500 (PIC) – March 2002



Note: These instructions pertain to PF firmware versions 4.00 or higher.

Note: Serial cable part number 2000947 connects to the serial port of the Seed Manager and to port3 on the PF.

Note: If are using a Rawson drive and a Seed Manager with a PF, refer to the Rawson instructions for proper setup.

Press the EDIT key and use the Up or Down Arrow keys to change the setting. For most settings, you can set each digit by pressing the Left or Right Arrow key to select the digit. Use the Up or Down Arrow keys to set the digit.

Area Counting

The area count switch (located on bottom right of front panel) must be up and flow must have started for area to be on.

Settings for Seed Manager or Vanguard 2500

1. Press SETUP key. Press APP RATE CONFIG key. Press CREATE NEW key. Set the following:
Controller Make: Set to *DICKEY-JOHN*.
Controller Model: Set to *SEED MANAGER*.
Product: Press EDIT key. You can select an existing product and press ACCEPT key or create a new product by pressing CREATE NEW key. Press EDIT NAME key and enter name of product. Use Left or Right Arrow keys to select a character. Use Up or Down Arrow key to change the character. Set every character and press ACCEPT key twice.
Units: Set to *SEEDS*.
Ground Speed Sensor: Set to *SERIAL*.
App Distance From GPS: Ignore this setting.
Full Swath: Swath comes from Seed Manager automatically.
Tgt Units:Contrler Units: Ignore this setting.
Target Rate Increment: Ignore this setting.
Actual Rate Scale Factor: Set to *1.000*.
2. Exit back to main screen.
 - a) Press FIELD key twice.
 - b) Select appropriate field and press VIEW CONFIG key.
 - c) Select appropriate product/controller configuration and press ACTIVE ON/OFF key to check it as active.(All other configs must be unchecked first).
 - d) Press ACCEPT key to accept field.