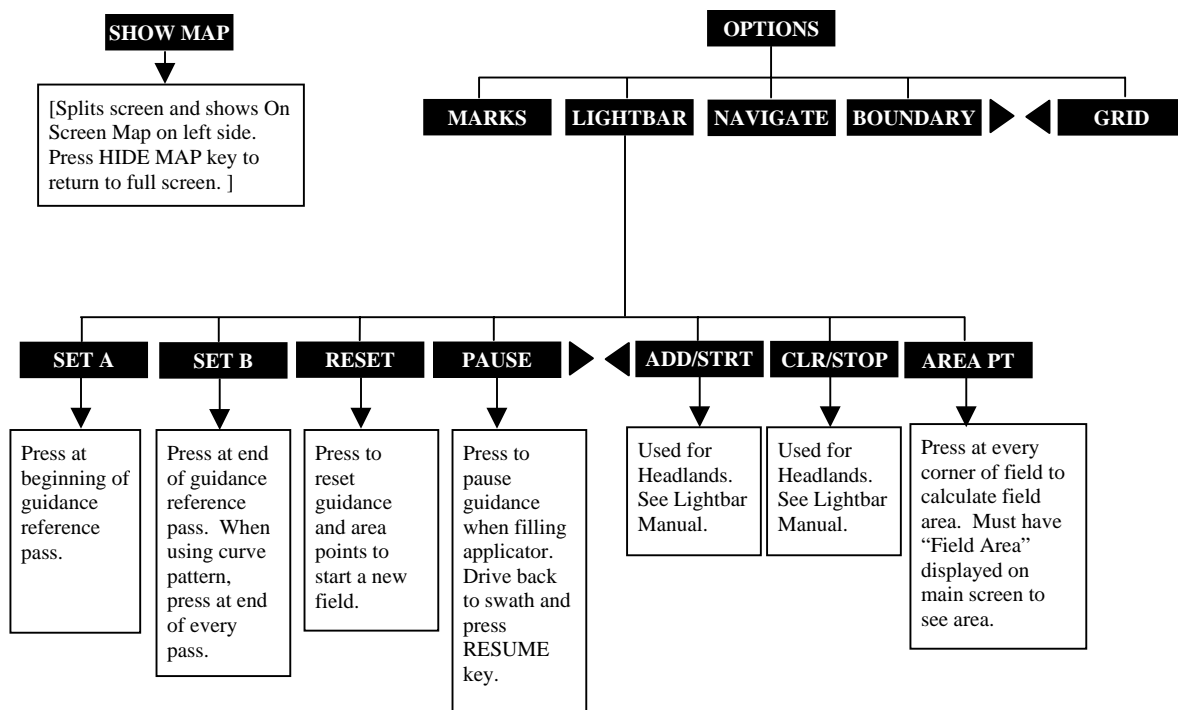
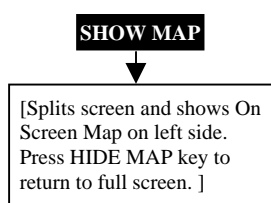
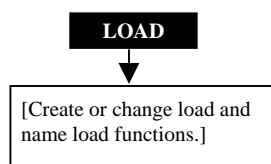
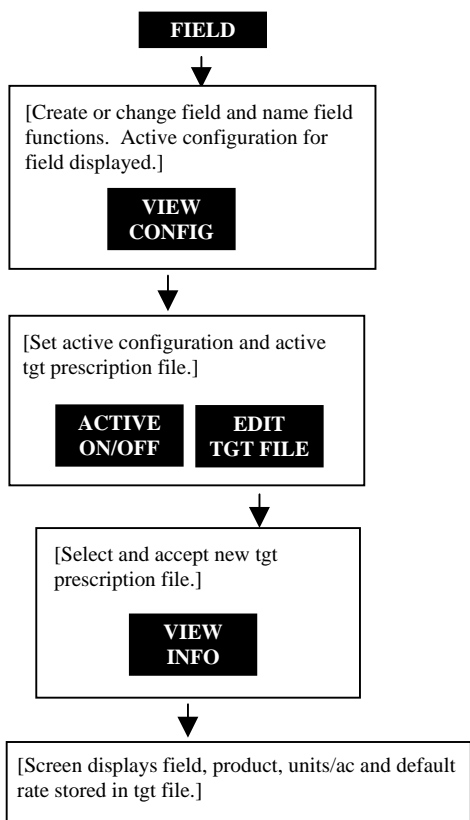
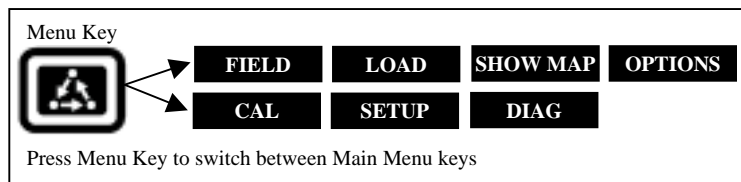
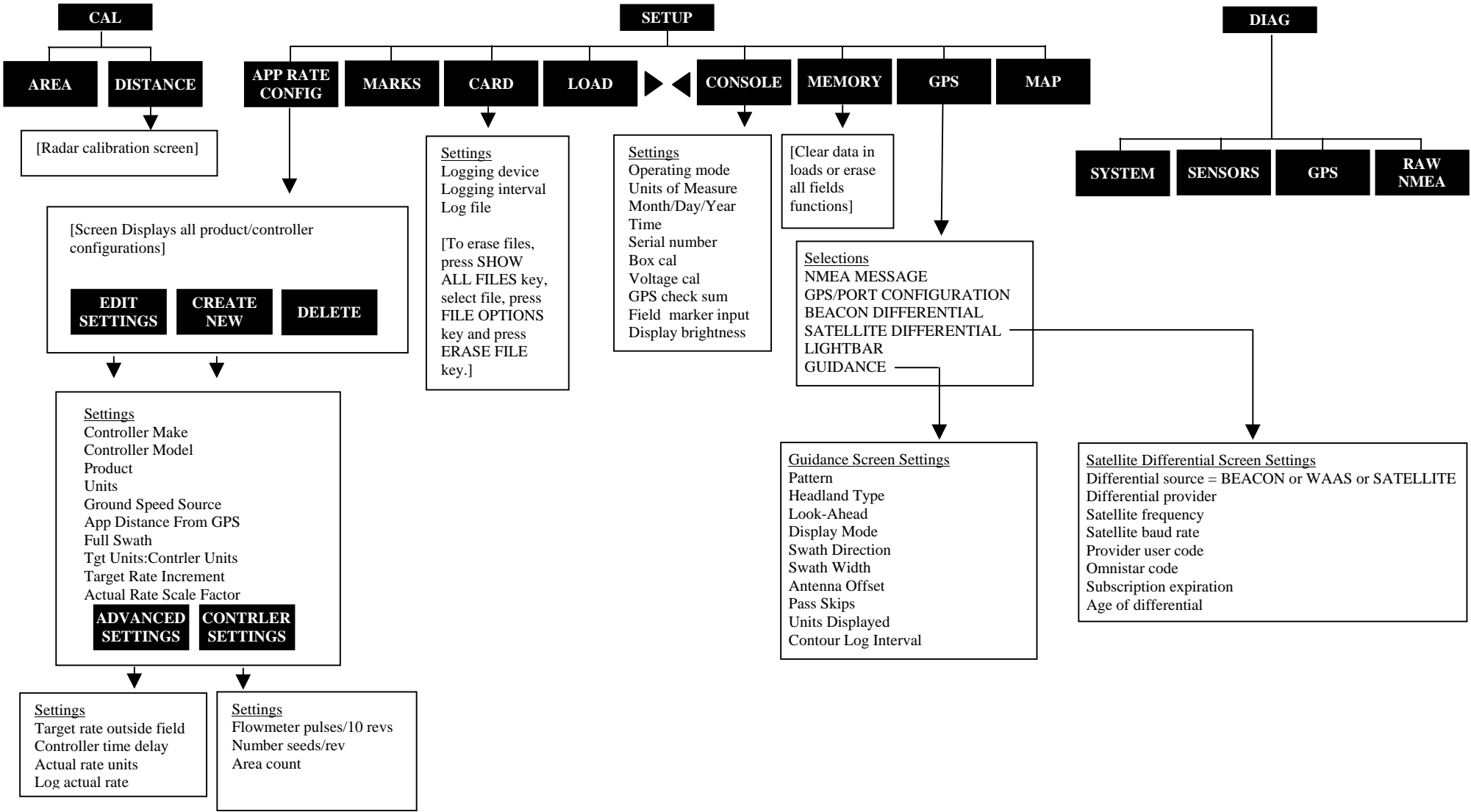
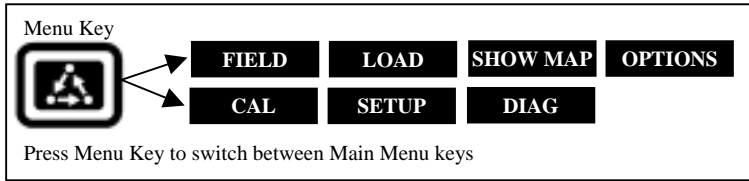


PFadvantage/PF3000/PF3000 Pro – Application Rate Mode - Menu Tree for Shaft Speed Sensor and Sprocket on planter – March 2002



PF3000 and PF3000 Pro – Application Rate Mode - Menu Tree for Shaft Speed Sensor and Sprocket on planter – March 2002



Note: These instructions pertain to PF firmware versions 4.00 or higher.

Settings for Shaft Speed Sensor and Sprocket on planter	
1.	<p>Press SETUP key. Press APP RATE CONFIG key. Press CREATE NEW key. Set the following: Controller Make: Set to <i>FLOWMETER</i>. Controller Model: Set to <i>PLANTING</i>. Product: Press EDIT key. You can select an existing product and press ACCEPT key or create a new product by pressing CREATE NEW key. Press EDIT NAME key and enter name of product. Use Left or Right Arrow keys to select a character. Use Up or Down Arrow key to change the character. Set every character and press ACCEPT key twice. Units: Set to Units/Acre of application. Ground Speed Sensor: Set to <i>RADAR</i> or <i>GPS</i>. App Distance From GPS: Ignore this setting. Tgt Units:Contrler Units: Ignore this setting. Target Rate Increment: Ignore this setting. Actual Rate Scale Factor: Set to <i>1.000</i>.</p>
2.	<p>Press CONTRLER SETTINGS key. Set the following: Flowmeter pulses/10 revs (PLANTING): Set equal to the number of teeth of sprocket for shaft speed sensor times ten. Example: If sprocket has 30 teeth then setting is 300 (30 x 10 = 300)</p>
	<p>Number seeds/rev (PLANTING): Use the following formula to determine this setting: $\frac{\text{\# of seeds dispensed for 1 row}}{\text{1 rev of sprocket}} \times \text{Total \# of rows}$ Example: 12 row planter, 6 seeds dispensed per row per one revolution of sprocket on planter transmission shaft. $6 \times 12 = 72$. Setting is 72. Area Count: Set to <i>Standard</i> if voltage from external switch goes high during operation. Set to <i>Reversed</i> if voltage from external switch goes low during operation. <i>Standard</i> is the normal setting.</p>
3	<p>Exit back to main screen. a) Press FIELD key twice. b) Select appropriate field and press VIEW CONFIG key. c) Select appropriate product/controller configuration and press ACTIVE ON/OFF key to check it as active.(All other configs must be unchecked first). d) Press ACCEPT key to accept field.</p>

Press the EDIT key and use the Up or Down Arrow keys to change the setting. For most settings, you can set each digit by pressing the Left or Right Arrow key to select the digit. Use the Up or Down Arrow keys to set the digit.

Area Counting
<p>The area count switch (located on bottom right of front panel) must be up and flow must have started for area to be on.</p>